

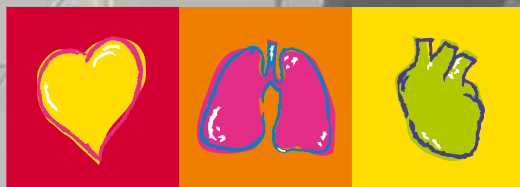


ARGUS PRO LifeCare 2

Defibrillator, pacemaker, patient monitor and 12-channel ECG in a compact design

- Only 4.4 kg and extremely robust
- Intuitive operator guidance
- 8.4" colour display, transfective
- 6-channel ECG recorder, 114 mm wide paper, Z-folded, 30 m long
- NIBP, 4 x IBP, 2 x temp., SpO₂, etCO₂
- Defibrillator with AED and manual mode
- Sophisticated wall mounting including battery charger and communications interfaces

The ARGUS PRO LifeCare 2 satisfies even highest expectations and offers an unequalled price-performance ratio.



SCHILLER

The Art of Diagnostics

ARGUS PRO LifeCare 2

Leading-edge technology is the key

Schiller AG surprised experts already in 1974 with an emergency electrocardioscope weighing just 480 grams, which started its triumphal procession throughout the world and laid the cornerstone for countless further successes. Moreover, our 480 grams light pocket defibrillator Easyport is still unrivalled and has saved many lives.

The ARGUS PRO LifeCare 2 heralds a new age in rescue services, meaning that paramedics no longer need to carry unnecessary ballast. Thanks to the skilful use of leading-edge technology and the robust lightweight construction that is also used in aircraft construction, Schiller has designed a defibrillator with built-in ECG unit that satisfies even highest expectations.

Schiller AG, an autonomous and financially independent company with more than 700 employees and 25 subsidiaries, offers you a worldwide unique service support and guarantees further technical peak performances.

SCHILLER AG
pioneering company
since 1974

Only 4.4 kg with

8.4" colour display

- Outstanding readability even in sunlight and from a distance
- 6 waveforms and all parameters individually configurable
- Diagnostic ECG with all 12 channels

Soft keys

- 7 soft keys for quick and easy operation and direct access to main features

Convenient 6-channel ECG printer

- Paper width: 114 mm
- Paper length: 30 m, Z-folded
- Settings individually configurable
- Paper replacement in a matter of seconds
- Printout is already folded



Examples of possible display configurations:



all options – makes life easier for paramedics



Lithium-ion rechargeable batteries

- 2 rechargeable batteries (10.4 V / 4.3 Ah each)
- Easily accessible, battery replacement in a matter of seconds

Defibrillation mode

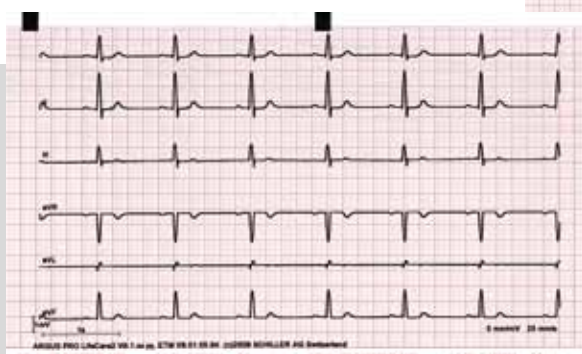
- 1 – 2 – 3 operation for AED or manual mode
- When in AED mode, the manual mode can be entered directly

Menu navigation

- Intuitive thanks to turn-and-push navigation button

Function keys

- The most important features are accessed via direct function keys



ARGUS PRO LifeCare 2

12-channel ECG

- Simultaneous 12-channel ECG
- Measurement and interpretation (optional)

NIBP

- Automatic blood pressure measurement for adults, children and neonates

2 USB interfaces

- Device configuration via USB stick
- Software updates
- Memory stick (e.g. for intervention data)
- WLAN

GSM

- Built-in GSM module for data transfer

Connection for defibrillator/pacer pads

- If pads are used, the left paddle connection is covered

Connection for left paddle

- If paddles are used instead of pads



Connections left

Storage and protection for all accessories



Capnography

- CO₂: both mainstream and sidestream available, IRMA sensor

Pulse oximetry SpO₂

- Masimo SET™ or Nellcor

2 temperatures

- Simultaneous measurement of core and skin temperature

4 invasive blood pressures

- Up to 4 simultaneous measurements of invasive blood pressure

Connection for right paddle

- If paddles are used instead of pads



Have everything close at hand in the two side pockets

- Accommodates even the paddles
- All sensors can be connected
- Optimal protection for the plugs



Connections right

ARGUS PRO LifeCare 2

Sophisticated wall mounting

- Extremely light and robust (carbon fibre-reinforced)
- One-hand operation with automatic locking
- Mains connector (100 - 250 V AC) and 15 Volt DC output
- Connection to on-board power supply 8 - 48 Volt DC
- Ethernet interface
- RS-232-C interface
- USB interface
- GSM antenna connection
- SIM card slot
- VGA connection for display unit
- Customised mounting on the wall or on horizontal surfaces

If the ARGUS PRO LifeCare 2 is unlocked without being removed from the wall mounting, the unit is again locked after approx. 10 seconds.

Charging unit

The ARGUS PRO LifeCare 2 can be charged without using the wall mounting, by connecting the device directly to the power supply and charging unit, which is supplied as standard. The corresponding connection is situated at the back of the device.



The electrical contacts for the connection with the ARGUS PRO LifeCare 2 are located on the back of the two recording cones and are protected from mechanical damage.



Technical Data

General data:

Dimensions: 260 x 265 x 145 mm (10.2 x 10.4 x 5.7 in)

Weight: 4.4 kg with all options and 2 batteries

Power supply: Lithium ion battery 10.4 V, 4.3 Ah (2x), capacity for at least 100 shocks at 120 J and 6 hours monitoring

Protection class: Applied part monitoring CF, defibrillation and pace-maker BF

Conformity: MDD 93/42/EEC; class IIb

Standards: IEC 60601-1, IEC 60601-1-2, IEC 60601-2-4, IEC 60601-2-27, IEC 60601-2-30, IEC 60601-2-34, IEC 60601-2-49, IEC 9919, IEC 1060-1, IEC 1060-3, IEC 14971, RTCA/DO 160-E, EN 1789, EN 13718

Environmental conditions:

- Temperature, operating: -10° to 40° C, -20° to 60 °C for one hour after device has been stored at room temperature
- Temperature, storage: -10° to 50° C/14° to 122° F
- Relative humidity: 0 to 95 %, non condensing

Display:

LCD colour display 8.4" (211 x 158 mm), transfective, backlit, resolution 1024 x 768 pixels (SVGA), clearly readable even in sunlight

Printer:

Printing technology: High-resolution thermal printer

Chart paper: Thermo-reactive, Z-folded, 114 mm wide

Measured parameters:

ECG:

Sampling frequency: 1000 Hz

Leads: Simultaneous acquisition of leads I, II, III, aVL, aVF, aVR, V1-V6

Artefact suppression: On/off

Pacemaker detection:

- Amplitude: min. 1 to 2 mV
- Atrial and ventricular pacemakers

Diagnostic ECG:

- Arrhythmia analysis
- Resting ECG including measurement and interpretation
- ST measurement/analysis

Respiration:

Measuring method: Thorax impedance method

- Respiration rate: 0 to 200/min
- Impedance: 0.1 to 3.0 Ohm
- Apnea: 15 to 35 sec

SpO₂:

Measuring method: Masimo SET™

Parameters: SpO₂, PP (peripheral pulse) (CO and METHb in preparation)

NIBP:

Parameters: SYS, MEAN, DIA, Pulse

Measurements: Single, automatic, short-time (15 min)

4 invasive blood pressures:

Parameters: SYS, MEAN, DIA, Pulse

Measuring range: SYS, MEAN, DIA: -400 to 400 mmHg

Temperature:

Number of inputs: 2 inputs for simultaneous measurement of 2 temperatures

etCO₂ Mainstream and sidestream:

Measuring methods: IRMA™ and ISA™

Range accuracy: CO₂ 0 - 10 % ± 0.3 % ABS or ± 6 %

Respiration rate: ± 1/min

Defibrillator/Transcutaneous pacemaker:

Defibrillation mode: AED and manual mode

Waveform: Multipulse Biowave®

Capacity: 100 shocks at 120J and 6 hours monitoring

AED:

Standard applied energy: 120 – 120 – 120 Joules; different energy levels can be factory-defined

Manual mode:

Energy manual adjustable: 2, 4, 8, 15, 30, 50, 70, 90, 110, 120, 150, 200 Joules

Transcutaneous pacemaker:

Mode: synchronized, non-synchronized

Output current: 0 – 150 mA, steps of 5 mA

Output rate: 40 – 200/min steps of 5 mA

All specifications are based on an environmental temperature of 25° C (if not separately indicated).

Technical data and images are subject to change without notice.





Asia
SCHILLER Asia-Pacific / Malaysia
52200 Kuala Lumpur, Malaysia
Phone +603 6272 3033
Fax +603 6272 2030
sales@schiller.com.my
www.schiller-asia.com



Austria
SCHILLER Handelsgesellschaft m.b.H.
A-4040 Linz
Phone +43 732 709 90
Fax +43 732 757 000
sales@schiller.at
www.schiller.at



China
SCHILLER Int'l Trading (Shanghai) Co. Ltd.
200335 Shanghai, China
Phone +86-21-62099627
Fax + 86-21-62099623
sales@schiller.com.my
www.schiller.cn



France
SCHILLER Médical S.A.S.
F-67162 Wissembourg/Cedex
Phone +33 3 88 63 36 00
Fax +33 3 88 94 12 82
info@schiller.fr
www.schiller-medical.com



France (distribution France)
SCHILLER France S.A.S.
F-77600 Bussy St Georges
Phone +33 1 64 66 50 00
Fax +33 1 64 66 50 10
infoschiller@schiller-france.fr
www.schiller-france.com



Germany
SCHILLER Medizintechnik GmbH
D-85521 Ottobrunn
Phone +49 89 62 99 81-0
Fax +49 89 609 50 90
info@schillermed.de
www.schillermed.de



Hungary
SCHILLER Diamed Ltd.
H-1141 Budapest
Phone +36 (1) 383-4780 / 460-9491
Fax +36 (1) 383-4778
sales@schiller.at
www.schiller-hungary.hu



India
SCHILLER Healthcare India Pvt. Ltd.
Mumbai - 400 001, India
Phone +91 22 6152 3333 / 2826 3520
Fax +91 22 2826 3525
sales@schillerindia.com
www.schillerindia.com



Japan
SCHILLER Japan, Ltd.
Hiroshima 734-8551
Phone +81 82 250 2055
Fax +81 82 253 1713
koji.maekawa@schiller.jp
www.schiller.jp



Poland
SCHILLER Poland Sp. z o.o.
PL-02-729 Warszawa
Phone +48 22 8432089
Fax +48 22 8432089
schiller@schiller.pl
www.schiller.pl



Russia & C.I.S.
SCHILLER AG Rep. office
125124 Moscow, Russia
Phone +7 (495) 970 11 33
Fax +7 (495) 970 11 33
mail@schiller-ag.com
www.schiller-cis.com



Spain
SCHILLER ESPAÑA, S.A.
E-28230-Las Rozas/Madrid
Phone +34 91 713 01 76
Fax +34 91 355 79 33
schiller@schiller.es
www.schiller.es



Switzerland
SCHILLER-Reomed AG
CH-8953 Dietikon
Phone +41 44 744 30 00
Fax +41 44 740 37 10
sales@schiller-reomed.ch
www.schiller-reomed.ch



Turkey
SCHILLER TÜRKİYE
Okmeydanı-Sisli - İstanbul
Phone +90 212 210 8681 (pbx)
Fax +90 212 210 8684
sales@schiller-turkiye.com
www.schiller-turkiye.com



USA
SCHILLER America Inc.
Doral, Florida 33122
Phone +1 786 845 0620
Fax +1 786 845 06 02
sales@schilleramerica.com
www.schilleramerica.com



SCHILLER

The Art of Diagnostics